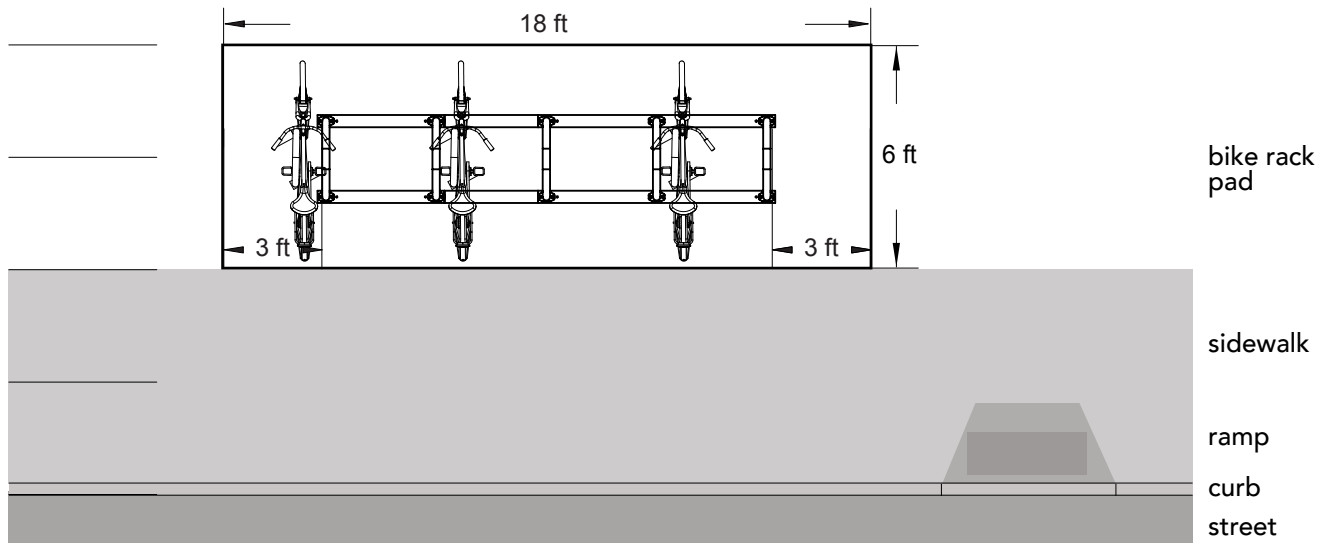


# Bike Parking Layout – Sidewalk Rack

## Sidewalk Rack

The surface for bike parking must be minimum of 6 ft deep and near a sidewalk ramp or curb cut

Standard 10-bike rack on rails  
(Saris Modular Corral Rack, 2022)



### Layout Tips

1. If the bike rack pad is not at least 6 ft deep, parked bikes will block the sidewalk
2. Where space is available, a deeper bike rack pad (9 ft to 12 ft) is desirable to accommodate recumbents, cargo bikes, and bicycles with child trailers
3. Bike racks must be accessible via a nearby curb cut or ramp without any vertical obstructions
4. Locate the rack within 50 ft of the building or business entrance where it is visible from the street
5. Where the primary entrance is adjacent to a parking lot, consider converting a parking space to bike parking
6. On sloped surfaces, use an angled rack configuration to keep bikes from rolling away or falling over.

### Landscape Tips

1. Locate sprinkler heads far enough away from the bike racks to keep them out of the spray zone or consider soaker hoses as an alternative irrigation system near the bike racks
2. Use stepable ground covers adjacent to the bike rack pad to provide space for people to access the end spaces of the rack
3. Use a hard, solid surface such as concrete, pavers, or brick as the bike rack pad. Mulch, grass, shell, or gravel are not suitable surfaces for bicycle kickstands
4. Include clearing debris from the bike rack as part of your regular landscape maintenance plan.